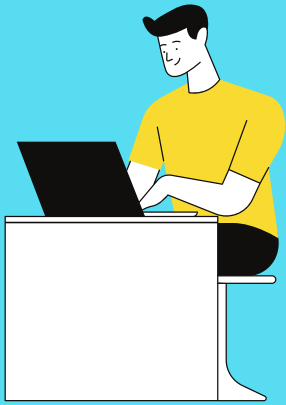


How to Apply for CalFresh

HERE ARE 5 SIMPLE STEPS TO HELP YOU APPLY QUICKLY



1.) FILL OUT AN APPLICATION

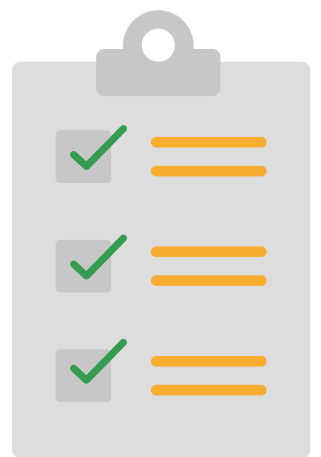
Applications can be found at www.getcalfresh.org or you can call **888-421-8080** to contact a representative from Santa Cruz County to help you over the phone. This takes just 10 minutes! Feel free to call if you have any difficulties.

2.) HAVE DOCUMENTS READY

You will need to have the following documents at hand as proof of your situation:

- Copy of your I.D.
- Proof of any income
- Proof of immigration status (for non-citizens)
- Proof of student status (for college students)

each case may require different documents. Your caseworker will let you know if they need anything else



3.) HAVE OTHER DOCUMENTS READY

Having more documents can increase the amount of benefits you receive. This may include:

- Proof of housing expenses
- Proof of child support paid
- Proof of child/dependent care paid
- Proof of medical expenses

4.) BE PREPARED FOR A PHONE INTERVIEW

Once your application is received and processed, a caseworker will call you to confirm the information you provided on your application and may ask for additional information or documentation. Have documents such as taxes, address verification, social security numbers, or proof of disability.



5.) WAIT TO RECEIVE BENEFITS

Your caseworker may call for any additional information they need. Once approved, your EBT card will be mailed to you, ready to be activated and used, within just 30 days. You can always call the county with any questions.

COMPILED BY CHAYLA FISHER

SOURCE/S:

getcalfresh.org

[www.santacruzhumanservices.org/EmploymentBenefits/CalFresh\(FoodStamps\)](http://www.santacruzhumanservices.org/EmploymentBenefits/CalFresh(FoodStamps))

Are you an immigrant? For more info on how to apply as an immigrant check out:

www.getcalfresh.org/en/immigrants

Are you in need of EBT due to COVID-19? Find out more about pandemic relief benefits at:

www.getcalfresh.org/en/coronavirus